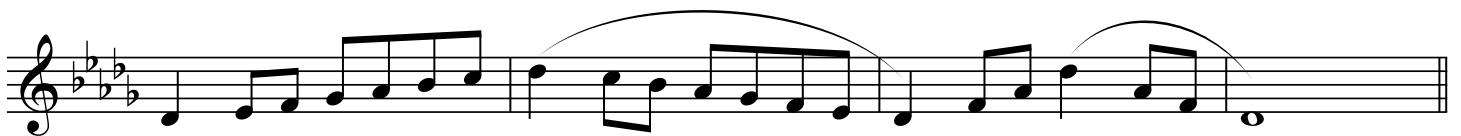
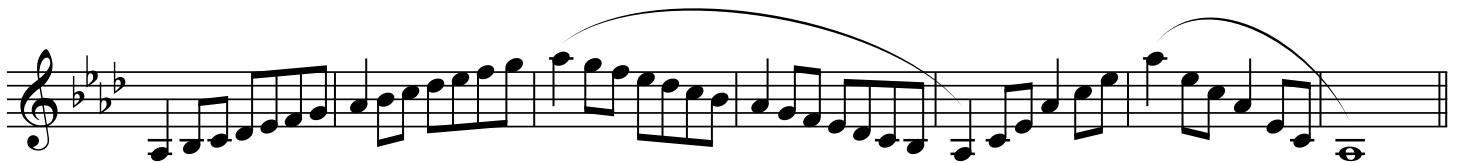
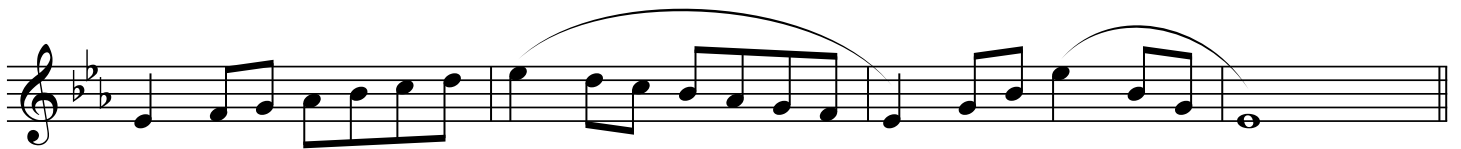


GEORGIA MUSIC EDUCATORS ASSOCIATION  
ALL STATE BAND SCALES  
SYMPHONIC BAND (GRADES 11-12) Eb CONTRA ALTO CLARINET

♩ = 144



The image displays four staves of musical notation for the Eb Contra Alto Clarinet. Each staff begins with a treble clef and a key signature of three flats (Bb, Eb, Ab). The first staff is in 3/4 time, while the subsequent three staves are in 2/4 time. The music consists of a continuous melodic line with various rhythmic patterns, including eighth and sixteenth notes, and rests. Phrasing slurs are used to group notes across measures. The notation is presented in a clean, black-and-white format.