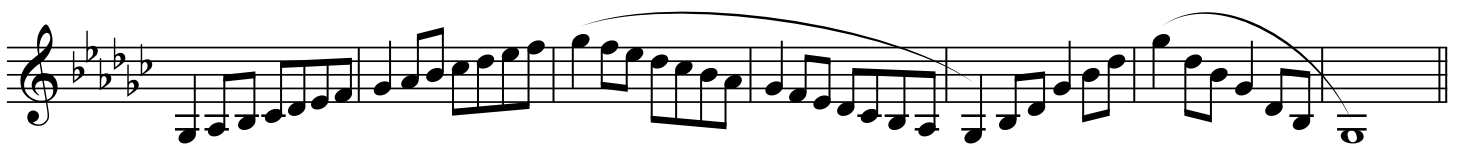
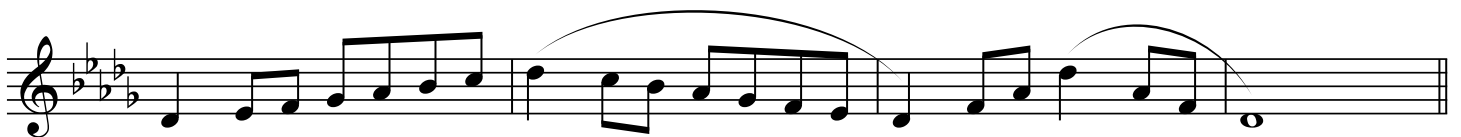
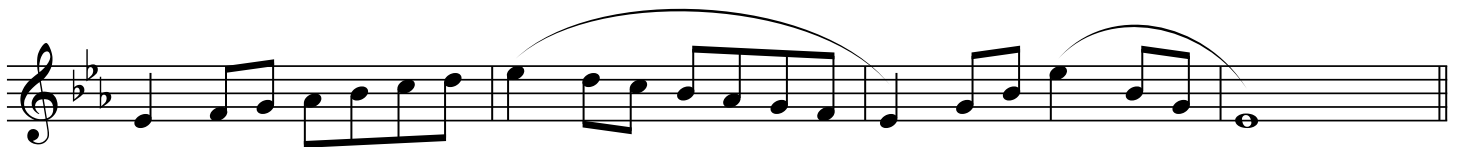
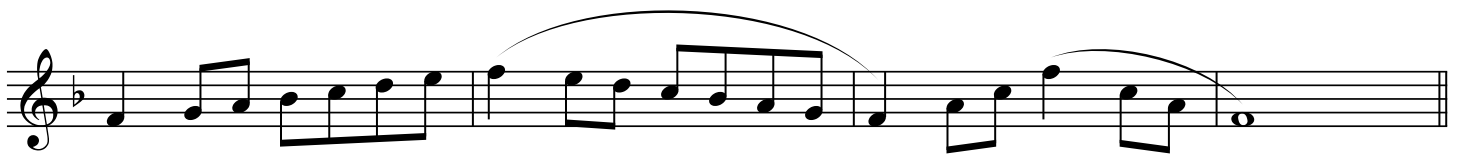
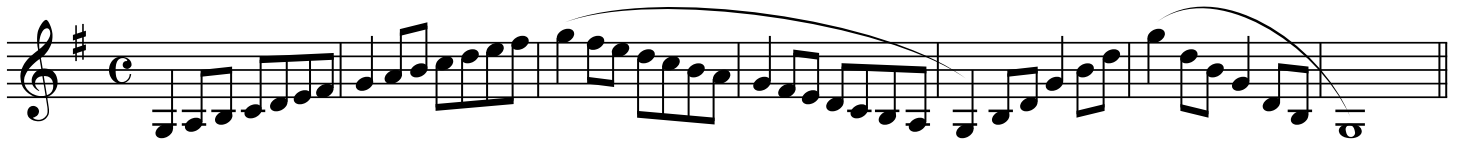


GEORGIA MUSIC EDUCATORS ASSOCIATION
ALL STATE BAND SCALES
SYMPHONIC BAND (GRADES 11-12) B \flat TRUMPET AND EUPHONIUM (TC)

$\text{♩} = 144$



The image displays four staves of musical notation for the Bb Tpt. and Euphonium (TC) part, page 2. The music is written in treble clef with a key signature of three sharps (F#, C#, G#). The notation includes various rhythmic values such as eighth and sixteenth notes, often beamed together. Phrasing is indicated by long, sweeping slurs that span across multiple measures. The piece concludes with a final whole note chord on the bottom staff.