

BERRY COLLEGE

FINE ARTS

2011-2012

EVENTS



Experience the arts at Berry!

Dear Patrons of the Arts,

Welcome to another year of music, dance, theater and art at Berry College! This brochure showcases the exciting program of performances and exhibits that our fine arts faculty has planned for the Berry College community and the broader community of Rome and Northwest Georgia for 2011-12. What a year this will be!

The arts are essential for individuals and the community to flourish. We need the arts, and we need to support our young artists. This year, we invite you to experience each of the fine arts at Berry firsthand!

Thank you for your support. I look forward to seeing you at an exhibit, concert or show.

Until then, best wishes,
*Thomas D. Kennedy, Dean
Evans School of Humanities, the Arts and
Social Sciences*



As we enter the third year of the Berry Concert Series and the promotion of our concerts and recitals with this beautiful brochure, we look forward to concerts, recitals, plays, and art exhibits of high quality and great variety from our students, faculty, and guest artists.



The newly remodeled Moon gallery will host visiting artists in painting, ceramics, drawing, and photography. The concerts range from large ensembles to solo recitals and chamber performances. Our theatre program presents contemporary and historical plays in multiple performances, and the spring dance concert is a popular annual feature.

Many of our performances are free and open to the public. I hope you will take advantage of this outstanding roster of offerings in Fine Arts at Berry College and, as always, come by and say hello.

Stan Pethel, Chair of Fine Arts

Fall Semester 2011-2012



August 22-September 16, 2011 | Dayna Thacker
"Call and Response" | Mixed Media | Moon Gallery
M-F, 9 a.m. - 4 p.m. | Gallery Talk, Monday, Aug. 22, 7 p.m.

Working in collage, assemblage and installation, Dayna Thacker uses found materials to investigate the thought systems we create in order to make sense of the world and ourselves and the connections between the physical and psychological and how each shapes the other. Thacker was awarded a studio space at the Atlanta Contemporary Art Center for 2008-2013; she was a finalist for the Forward Arts Foundation 2010 Emerging Artist Award; and her work was featured in the 2009 Southern issue of *New American Paintings*. Thacker's 2010 solo show at the Barbara Archer Gallery was given a glowing review in the September/October 2010 issue of *Art Papers* magazine.

Berry College *Concert Series*

CONCERT I



September 15, 2011 | Toby Oft, trombone
7:30 p.m. | Ford Auditorium

Toby Oft is the principal trombonist of the Boston Symphony Orchestra. Toby has performed throughout Europe and the United States with such notable orchestras as the Tonhalle Orchestra Zurich, the Royal Liverpool Philharmonic Orchestra, the Los Angeles Philharmonic, the New York Philharmonic and the Buffalo Philharmonic Orchestra. He is formerly the principal trombonist of the San Diego Symphony Orchestra. The Berry College Fine Arts Department is delighted to begin the annual Concert Series with this extraordinary performer!

September 19-October 14, 2011 | Sarah Emerson
"Black Garden" | Painting | Moon Gallery

M-F, 9 a.m. - 4 p.m. | Gallery Talk, Monday, Sept. 19, 7 p.m.

Sarah Emerson graduated from the Atlanta College of Art in 1997 and went on to complete a Master's Degree at Goldsmiths College in London, England in 2000. Over the last ten years she has exhibited her paintings in galleries throughout the United States and Europe, including at White Columns, New York, Cosmic Gallery, Paris, and Real Art Ways, Hartford, CT. She lives and works in Atlanta, Georgia, but over the years she has lived in Boston, London, and New York. Her paintings have been featured on the cover of *New American Paintings* twice and this year she was a finalist for the Atlanta Artadia Award. She is represented by Whitespace Gallery in Atlanta and she currently teaches painting and drawing at Emory University.





September 22, 2011 | Faculty Recital: "Past and Present"
Ellie Jenkins, horn; Eric Hanson, double bass
7:30 p.m. | Ford Auditorium

Eric Hanson and Ellie Jenkins will perform music by Mozart and Vanhal on period instruments. Also featured is *Pinocchio Portraits*, a duo by American composer Sy Brandon.

Berry College
Concert Series
CONCERT II



September 29, 2011 | Lopez Tabor Duo
7:30 p.m. | Ford Auditorium

The members of the Lopez Tabor Duo, violinist Alfonso Lopez and pianist Michelle Tabor, have performed together in the U.S. and Venezuela since 2004. Lopez is the Concertmaster of the Venezuela Symphony Orchestra. He also is a teacher, composer, and conductor. Michelle Tabor grew up in Caracas, Venezuela. The daughter of a Venezuelan mother and an American father, she now lives in Tallahassee, Florida.

This concert will feature traditional repertoire with works by Spanish and Latin American composers.



September 29-October 6, 2011

THE BERRY COLLEGE THEATRE COMPANY PRESENTS
***Moonlight and Magnolias* by Ron Hutchinson**
Directed by Christian Boy | 8 p.m. nightly
Sunday matinee 2 p.m. | E.H. Young Theatre

1939 Hollywood is abuzz. Legendary producer David O. Selznick has shut down production of his new epic, *Gone With The Wind*, a film adaptation of Margaret Mitchell's novel. The screenplay, you see, just doesn't work. So what's an all-powerful movie mogul to do? While fending off the film's stars, gossip columnists and his own father-in-law, Selznick sends a car for famed screenwriter Ben Hecht and pulls formidable director Victor Fleming from the set of *The Wizard of Oz*. Summoning both to his office, he locks the doors, closes the shades, and on a diet of bananas and peanuts, the three men labor over five days to fashion a screenplay that will become the blueprint for one of the most successful and beloved films of all time. *Contains graphic language.* Call the Box Office at 706-236-2263 for more information.



**October 1, 2011 | Mountain Day Wind Ensemble
Mountain Campus**

The Berry College Wind Ensemble celebrates Berry College's Mountain Day with a program full of pop tunes, patriotic music, and some of the most famous marches. As it is tradition, music seniors and some alumni participate as guest conductors and performers.



**October 13, 2011 | Guest Artists Concert
Georgia Brass Band | 7:30 p.m. | Ford Auditorium**

The Georgia Brass Band is a leading ensemble in the United States, promoting a modern American concept of the historic British brass band tradition. The band's repertoire is quite diverse, ranging from Renaissance and Baroque to 21st century. Their library is full of marches, sacred arrangements, popular music, jazz tunes, movie themes, and classical transcriptions. The Georgia Brass Band has appeared on local television and performed at concert halls, festivals, and colleges throughout the United States. They are consistently winners at the annual North American Brass Band Association Championships. Join us for a fun evening of brass music.



**October 17-November 11, 2011 | Ian Childers
"A Bit of Everything" | Ceramics and Mixed Media
M-F, 9 a.m. - 4 p.m. | Moon Gallery
Gallery Talk, Monday, October 17, 7 p.m.**

"This is a show about my surrender to whimsy in my studio practices. There are several completely separate and yet completely equal sections to this body of work all of which are only related by the fact that I am the creator and that I prefer to build them with my own hands.

"In this world of 500 channels of cable television, millions of web sites, cell phones, text messages, emails, instant messaging and every other form of communication that we have been introduced to in my life time, we as human beings of this media overdose called the technological age, have just begun a downward spiral in the losing of sensation to information. More and more we are focusing on the gossip, the

shock and awe, the sheer stupidity of all things “Viral.” With so much information bombarding us all every day, some are now handling the information that we have to give to the world in the same manner. My hand and my idea are locked in this course. The moment I find myself focusing on any one thing for any period of time; the more I want to move onto what is next. I present to you here, my own version of studio practice channel surfing.”



**October 20, 2011 | Faculty Recital: Luther Enloe, guitar
7:30 p.m. | Frost Chapel**

Frost Chapel provides a beautiful setting for Luther Enloe’s program of 19th and 20th century classical guitar music. Dr. Enloe’s program will feature works by Fernando Sor, Francisco Tárrega, Felix Mendelssohn, Heitor Villa-Lobos, and Maximo Diego Pujol.



**October 27, 2011 | Faculty Collaborative Recital:
“Proclamation and Song” | Adam Hayes, trumpet; Kris
Carlisle, piano 7:30 p.m. | Ford Auditorium**

On the heels of the international release of their debut album *CURRENT*, Berry music faculty Kris Carlisle and Adam Hayes take to the stage with fresh compositions, and an exciting program of modern music for trumpet and piano.

This concert will include music by Eugene Bozza, Alan Ridout, and Robert Blum, and will feature Norman Dello Joio’s *Sonata for Trumpet and Piano*.



**November 3, 2011 | Guest Artist Recital
Dina Cancryn, soprano
7:30 p.m. | Ford Auditorium**

Soprano Dina Cancryn returns to Berry College to join faculty pianist Kris Carlisle in launching a new performance tour. The duo will perform a variety of classic literature, new compositions, and perhaps a few old favorites!

**November 10, 2011 | Fall Concert: The Berry Jazz Ensemble
with Special Guest John David | Adam Hayes, director
7:30 p.m. | Ford Auditorium**

The Berry Jazz Ensemble welcomes renowned drummer John David to their fall concert. This program will capture the jazz drumming phenom at his best, with a variety of styles and genres. Come join the B.J.E. for an exciting evening of hard-swinging jazz.



November 10-13 and November 17-20, 2011

THE BERRY COLLEGE THEATRE COMPANY PRESENTS

***Oleanna* by David Mamet and *Third* by Wendy Wasserstein**
Running in Repertory (alternate nights)

Directed by John Countryman

8 p.m. nightly | 2 p.m. Sunday matinees | E.H. Young Theatre



Oleanna: A college student, Carol, drops by her professor's office in an effort to gain his help to do better in class. John, the professor, in the midst of buying a house to celebrate his nomination for tenure, at first seems distant. As the first meeting progresses the two discuss the nature of understanding and judgment in society, as well as their very own natures and places in our society. It seems as if a bond has been made. When next they meet we find that a report has been filed to the tenure committee. Carol has joined a "group" and has decided that John sexually harassed her during their first meeting. Their second meeting dissects the first; every word, every nuance of the first meeting has been twisted into something else. Or has it? John's unsuccessful attempts to convince Carol to retract her accusation escalate to a more dangerous level. The third meeting, one the court officers warned against, climaxes violently, leaving John and Carol both physically and emotionally devastated. *Contains graphic language.*



Third: His name is Woodson Bull III, but you can just call him "Third." And Professor Laurie Jameson is disinclined to like his jockish, jingoistic attitude. He is, as she puts it, "a walking red state." Believing that such a specimen could not possibly have written Third's sophisticated essay on King Lear, Professor Jameson reports his plagiarism to the college's Committee on Academic Standards. But is Jameson's accusation justified? Or is she casting Third as the villain in her own struggle with her relationships, her age and the increasingly polarized political environment? *Contains graphic language.* Call the Box Office at 706-236-2263 for more information.



November 13, 2011 | Fall Concert: Berry College

Concert Choir | Harry Musselwhite, director

3:00 p.m. | Berry College Chapel

The Fall Concert of the Berry College Concert Choir will feature stirring masterworks from the choral repertory. Ranging from early music to contemporary works, the Concert Choir will fill the historic chapel with its signature rich sound. The concert will feature Kris Carlisle at the Steinway piano.



November 14, 2011 | Fall Concert: Berry College Symphony

Orchestra | Mirna Ogrizovic-Ciric, director

7:30 p.m. | Ford Auditorium

The Berry College Symphony Orchestra, comprised of string and wind players from the campus and community, delights audiences with great orchestral literature. The audience will enjoy major orchestral works as well as some lighter holiday favorites.



November 17, 2011 | Fall Concert: The Berry College Wind Ensemble presents "Educazione Internazionale"
Glenn Garrido, director | 7:30 p.m. | Ford Auditorium
 The Berry College Wind Ensemble celebrates International Education Week with a special program that features some of the most important Italian works for band and a guest conductor from Italy.



November 21, 2011 | Fall Concert: Berry Singers
Harry Musselwhite, director | 7:30 p.m. | Frost Chapel
 The audition-only chamber choir of Berry College, The Berry Singers, will present a concert of French music in their Fall offering. Choral music of Debussy, Ravel, Faure, and Saint-Saens will be heard in the incomparable acoustics of the famous chapel on Berry College's Mountain Campus. Piano Professor Kris Carlisle will be the featured accompanist.



November 29, 2011 | Lessons & Carols with the Berry College Concert Choir and Berry Singers
Harry Musselwhite, director | 7:00 p.m. | College Chapel
 The entire northwest Georgia community looks forward each year to the sounds of the traditional Anglican Lessons & Carols service. The Berry College Concert Choir, Berry Singers, soloists, organist, and more sing the music of the season with the solemn readings of traditional scriptures. Each year the audience anticipates the exciting sounds of Handel's *Hallelujah* and the dramatic lighting of the candles in the darkened Berry College Chapel.



December 1, 2011 | Fall Concert: Woodwind Ensembles
John Davis and Mickey Fisher, directors
7:30 p.m. | Ford Auditorium
 Berry woodwind faculty members Mr. Mickey Fisher and Dr. John Davis will present the Berry Clarinet Ensemble, Flute Choir, and Saxophone Ensemble in a program of original and arranged chamber works that utilize the exotic as well as the more familiar members of these instrument families.

December 1-4, 2011
THE BERRY COLLEGE THEATRE COMPANY PRESENTS
***The Santaland Diaries* by David Sedaris**
Adapted for the Stage by Joe Mantello
Directed by Christian Boy | 8 p.m. nightly
2 p.m. Sunday matinee | E.H. Young Theatre
The Santaland Diaries is a brilliant evocation of what a slacker's Christmas must feel like. Out of work, our slacker decides to become a Macy's elf during the holiday crunch. At first the job is simply humiliating, but once the thousands of visitors start pouring through Santa's workshop, he becomes battle weary and bitter. Taking consolation in the fact that some of the other elves were television extras on *One Life To Live*, he grins and bears it, occasionally taking out his frustrations on the children and parents alike. The piece ends with yet another Santa being rushed into the workshop, but this one is different from the



lecherous and drunken ones with whom he has had to work. This Santa actually seems to care about and love the children who come to see him, startling our hero into an uncharacteristic moment of goodwill just before his employment runs out. *Contains graphic language.* Call the Box Office at 706-236-2263 for more information.

*Berry College
Concert Series*

CONCERT III



**December 2, 2011 | Terrell Stafford, jazz trumpeter
8:00 p.m. | Krannert Center Ballrooms**

Terrell Stafford has been hailed as one of the great jazz trumpet players of our time. Known as a gifted and versatile player with a voice all his own, Stafford combines lyricism and a deep love of melody with a spirited, adventurous edge. This uniquely expressive, well-defined musical talent allows Stafford the ability to dance in and around the rich trumpet tradition of his predecessors while making his own inroads.

In addition to recording six albums as a leader, Stafford is currently a member of the Grammy award-winning Vanguard Jazz Orchestra, as well as a member of the Grammy-nominated Clayton Brothers Quintet. As an educator, Stafford currently holds the positions of Director of Jazz Studies and Chair of Instrumental Studies at Temple University in Philadelphia.



This concert is in conjunction with the 2011 Georgia Association of Jazz Educators State Clinics hosted by Berry College, and is sponsored in part by G.A.J.E. and North Georgia Horn Works.

*Experience the arts
at Berry!* Firsthand

Spring Semester 2011-2012



January 9-February 3, 2012 | Arthur Skinner
"Views and Reflections" | Drawings and Silver Prints
M-F, 9 a.m.-4 p.m. | Moon Gallery
Gallery Talk, Monday, January 9, 7 p.m.

Arthur Skinner was born in Atlanta in 1950. In 1972 he received his BA in Visual Arts at Florida Presbyterian College (now Eckerd College). He then studied for a year at the Santa Reparata Graphic Arts Centre in Florence, Italy, and in 1976 earned his MVA in printmaking at Georgia State University. For the past thirty-four years he has been a member of the Visual Arts faculty at Eckerd College.

"A romantic at heart, I've long been fascinated with decline and ruin, and lately I've become intrigued with debris as a subject. But these works are also about seeing light beyond the shadows, listening for moments of stillness amidst the cacophony, searching for remnants of order among the fragments, embracing humor in the face of despair, and finding beauty in unexpected places."



January 13, 2012 | Guest Artists Concert
Clocktower Jazz Ensemble | Sam Baltzer, director
8:00 p.m. | Ford Auditorium

Northwest Georgia's own Clocktower Jazz Ensemble will present a concert of jazz favorites. This concert is in conjunction with the Georgia District 7 Jazz Honor Clinics, hosted by Berry College.



February 6-March 2, 2012 | Laurie Steele and Lisa Caldwell
"Sin Twisters" | Painting, Ceramics, Mixed Media
M-F, 9 a.m.-4 p.m. | Moon Gallery
Gallery Talk, Monday, February 6, 7 p.m.

Steele: "I work with clay and mixed media including found objects such as keys that have long forgotten what they used to unlock. Many of the ceramic pieces that I make seem to resemble things that I have been searching for... fossils that I wish were found in a river, washed up on a beach or uncovered in a quarry. Many of my forms look like they have come from the sea or another planet. Most recently I have been working on a series of pieces that reflect events and emotions from my life; these are called the Art Diaries. Each piece includes a narrative that describes the event that inspired the work."
Caldwell: "I think I was born scrambling over rocks, running through fields, riding my horse, "Betsy". Late in the evening I would return home looking at the moonlit stars and pondering the constellations. Even as a child wondering, "what was the meaning of all this?" An only child has too much time to fret over such things. Thank goodness I lived in the country on a farm where animals were my partners in crime."



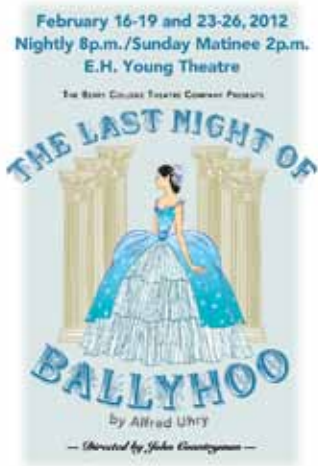


**February 16, 2012 | Guest Artists Concert
The Georgia Southern University Faculty Brass & Percussion
7:30 p.m. | Ford Auditorium**

The brass and percussion faculty from Georgia Southern University will perform a wide variety of styles including Rossini overtures, Debussy and Ravel piano pieces, Saint-Saëns orchestral works, jazz arrangements, and rock tunes from Earth, Wind & Fire and Led Zepellin.

This concert is part of a faculty performance exchange with Berry College music faculty. Join the GSU faculty for a fun evening of brass and percussion!

**February 16-19 and February 23-26, 2012
THE BERRY COLLEGE THEATRE COMPANY PRESENTS
The Last Night of Ballyhoo by Alfred Uhry
Directed by John Countryman | 8 p.m. nightly
2 p.m. Sunday matinees | E. H. Young Theatre**



The Last Night of Ballyhoo takes place in Atlanta, Georgia, in December of 1939. *Gone With The Wind* is having its world premiere, and Hitler is invading Poland, but Atlanta's elitist German Jews are much more concerned with who is going to Ballyhoo, the social event of the season. Especially concerned is the Freitag family: bachelor Adolph, his widowed sister, Beulah (Boo) Levy, and their also widowed sister-in-law, Reba. Boo is determined to have her dreamy, unpopular daughter, Lala, attend Ballyhoo, believing it will be Lala's last chance to find a socially acceptable husband. Adolph brings his new assistant, Joe Farkas, home for dinner. Joe is Brooklyn born and bred, and furthermore is of Eastern European heritage—several social rungs below the Freitags, in Beulah's opinion. Lala, however, is charmed by Joe and she hints broadly about being taken to Ballyhoo, but he turns her down. This enrages Boo, and matters get worse when Joe falls for Lala's cousin, Reba's daughter, Sunny, home from Wellesley for Christmas vacation. Will Boo succeed in snaring Peach Weil, a member of one of the finest Jewish families in the South? Will Sunny and Joe avoid the land mines of prejudice that stand in their way? Will Lala ever get to Ballyhoo? The family gets pulled apart and then mended together with plenty of comedy, romance and revelations along the way. Events take several unexpected turns as the characters face where they come from and are forced to deal with who they really are. Call the Box Office at 706-236-2263 for more information.



**February 28, 2012 | Winter Concert: The Berry College
Wind Ensemble presents "Southern Winds Festival"
Glenn Garrido, director | 7:30 p.m. | Ford Auditorium**

The Berry College Wind Ensemble presents its first concert of the spring semester with a delightful program that features original music written for winds.



**March 1, 2012 | Faculty Collective Recital: Faculty Favorites!
7:30 p.m. | Ford Auditorium**

The Berry College music faculty will join forces to present an evening of wonderful chamber music. This year, each performer will choose a favorite piece or composer to share. Join us for this annual showcase of talents from our world-class music faculty.

**March 12-April 6, 2011 | Linda Armstrong
"Fruits of Wandering" | Cast Bronze, Mixed Media,
Drawings | M-F, 9 a.m.-4 p.m. | Moon Gallery
Gallery Talk, Monday March 12, 7 p.m.**

"The primary subject of my work has been the continuing investigation of the places in which I experience man's cultural impact over time, layered with the reality of environmental beauty and the subsequent degradation. I am involved with the multi-layered aspects affecting the natural environment juxtaposed with the activity of collecting specimens. Using sculptural, drawing, and photographic elements, I construct a simulacrum of endangered spaces."

"One of these places is Cumberland Island, a remote natural, unspoiled wilderness area off the coast of Georgia. Just after dawn on a late spring morning on the island, I made a discovery that would make a profound change in my art and me. As I walked the beach, I came upon a dead dolphin that had washed ashore during the night. Later that day, I met with Carol Ruckdeschel, the Cumberland Island Museum resident naturalist, who had brought the dolphin into her lab to ascertain the cause of death. She showed me that the dolphin had lesions in its mouth, indicating an immune deficiency like disease. It was the first example that she had seen on the island. Man-made pollution the likely source. "



March 15, 2012 | Faculty Recital: John Davis, flute; Kris Carlisle, piano | 7:30 p.m. | Ford Auditorium

Berry faculty members Dr. John Davis and Dr. Kris Carlisle will present a program of masterworks for flute and piano that range from Baroque to modern. This recital marks the fifth year of Drs. Davis and Carlisle's recital, masterclass, and recording collaboration.



**Saturday, March 17, 2012 | Festival of Staged Readings
Curtain times: 10:00 a.m. | 1:00 p.m. | 4:00 p.m. | 8:00p.m.
Staged by multiple directors | E.H. Young Theatre**

Original works and scripts by established playwrights from the 50s to the present. Admission to all of the readings is FREE of charge! Call the Box Office at 706-236-2263 for more information.

*Berry College
Concert Series*

CONCERT IV



7:30 p.m. | Ford Auditorium

Award-winning performer, teacher, and director, Gretchen Reinhagen visits Berry College to present a wonderful evening of cabaret-style entertainment. Gretchen has performed in a broad range of theaters and concert halls from the House of Blues in New Orleans to the Assembly Rooms in Edinburgh, Scotland. A few of her favorite professional credits include Janis Joplin in *Beehive*, Louise Segar in *Always Patsy Cline*, Domina in *A Funny Thing Happened on the Way to the Forum*, the Narrator in *Joseph and the Amazing Technicolor Dreamcoat*, the lead role of the therapist in the premier of *Mother Me Therapy* at the Cherry Lane Theatre in New York, and the Queen Mother in European premier of *Rumpelstiltskin's Daughter* at the Edinburgh Fringe Festival in Scotland.

**March 22 & 23 at 8 p.m. | March 24 at 2 p.m. and 8 p.m.
Rome City Auditorium**

"Vitality" | The 15th Annual Concert of the Berry College

Dance Troupe | Artistic Director: Jeanne M. Schul, Ph.D. Join Berry College Dance Troupe for an enlivening evening of dance in celebration of our 15 years of company performances. *Vitality* will draw you under its spell with explosions of vibrant life force energy and then encircle you with soothing images of inner resilience. Witness both the physical strength of the dancers, as well as their depth of purpose. Enjoy the enthusiasm for life expressed through tap, jazz, ballet, hip-hop, contemporary, and Latin dance. This year's concert will include choreography by Dr. Jeanne Schul, selected dance minors, adjudicated student choreographers, and invited Dance Troupe Alumni who will make a special appearance in celebration of our fifteenth year.



Doors open half hour before each show. Call 706-802-6733 for more information.



*Berry College
Concert Series*

CONCERT V

**March 27, 2012 | The Michael O'Neal Singers
7:30 p.m. | Berry College Chapel**

With a repertoire spanning centuries and styles, The Michael O'Neal Chamber Singers has emerged as one of



the Southeast's finest vocal ensembles with its choral variety and polished presentation. Performing sacred and secular selections, the 24-member group is delighted to perform on the Berry College Concert Series.

Now in its twenty-second season, The Michael O'Neal Singers has established a reputation for choral excellence that extends throughout the United States and abroad, as subscription series performances, concert tours, and a growing discography have received acclaim from audience members and music critics alike. The full chorus has eleven recordings to its credit and has performed in some of the most notable venues in the world, receiving high accolades for artistic excellence and crowd-pleasing programming. These venues include Carnegie Hall in New York; the historic St. Giles Cathedral in Edinburgh, Scotland; St. Paul's Cathedral and Westminster Abbey in London; as well as the Parisian landmarks of Notre Dame and Sacre Coeur.



**March 30, 2012, 7:30 p.m.; March 31, 2 p.m. and 7:30 p.m. April 1, 2 p.m. | *The 25th Annual Putnam County Spelling Bee* | Ford Auditorium
Produced and Directed by Ruth Baker, Kris Carlisle and Harry Musselwhite**

Enjoy this hilarious tale of overachievers' angst chronicling the experience of six adolescent outsiders vying for the spelling championship of a lifetime. The show's Tony Award winning creative team has created the unlikeliest of hit musicals about the unlikeliest of heroes: a quirky yet charming cast of outsiders for whom a spelling bee is the one place where they can stand out and fit in at the same time.

Music and Lyrics by William Finn, Book by Rachel Sheinkin
Conceived by Rebecca Feldman
Additional Material by Jay Reiss
Originally Directed on Broadway by James Lapine
Originally produced on Broadway by David Stone, James L. Nederlander, Barbara Whitman, Patrick Catullo
Barrington Stage Company, Second Stage Theatre
Presented with special arrangement with Music Theatre International (MTI).



**April 5, 2012 | Spring Concert: Guitar Studio Recital
Luther Enloe, director | 7:30 p.m. | Ford Auditorium**

**April 9-13, 2012 | Annual Student Honors Show
M-F, 9 a.m.-4 p.m. | Moon Gallery
Juror: Linda Armstrong speaks at opening
Opening, Awards, Monday, April 9, 7 p.m.**

Linda Armstrong is an Atlanta-based artist who received her BFA from the Atlanta College of Art, and her MFA Georgia State University. While an undergraduate she attended the



Yale Summer School of Music and Art on a fellowship. In 2011 she will have a solo exhibit at the Kunstraum Tapir, Berlin, Germany and is returning for another residency at Takt Kunstprojektraum. In 2010 she was a resident at the Sanskriti Foundation in New Delhi, India. In 2009 she was an Artist in Residence at Takt Kunstprojektraum, in Berlin, Germany and the Caversham Centre in South Africa in 2007. Armstrong has been the recipient of numerous grants and fellowships, including the Virginia Center for the Creative Arts, the Hambidge Center for the Creative Arts & Sciences, the Fulton County Arts Council and the Georgia Council for the Arts. She was recipient of a grant from the Southern Arts Federation/ National Endowment for the Arts in 1992. She has had one-person exhibitions at the Institute of Ecology at the University of Georgia, the Southeastern Center for Contemporary Art, the Atlanta Contemporary Art Center, the Spruill Gallery and Converse College. Her recent solo exhibition "Collecting Excursions" was on view at the Emory Visual Arts Gallery and traveled to Hillsborough College in Tampa, Florida in 2009. She has been included in numerous group exhibitions, including "Still Water" at Agnes Scott College and "Transitions" and "Drawn in Georgia: Works on Paper from the MOCA GA Permanent Collection." Her work is included in the Hartsfield Jackson Atlanta International Airport collection. Since 1993 Linda Armstrong has taught sculpture at Emory University's Visual Arts Department.



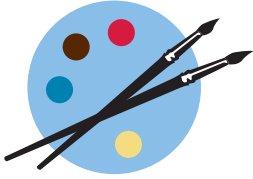
April 12, 2012 | Spring Concert: The Berry Jazz Ensemble presents: "Continuum" | Adam Hayes, director 8:00 p.m. | Ford Auditorium

The Berry Jazz Ensemble and Berry Jazz Combo continue their tradition of presenting quality and varied programs. "Continuum" will feature progressive compositions for modern jazz orchestra. Selections will include new jazz arrangements exploring a variety of styles including, ethno-jazz, urban grooves, Latin styles, nu jazz, livetronica, and neo-bop. Join the B.J.E. for an exciting look at where jazz is, and where it may be going.



April 15, 2012 | Spring Concert: Concert Choir & Berry Singers present "A Festival of Choral Music" Harry Musselwhite, director | 3:00 p.m. | College Chapel

The Berry College Concert Choir and The Berry Singers will present a Festival of Choral Music in historic Berry College Chapel. The music of Mozart, Haydn, and other Classical composers will celebrate the art of choral music and the spring season. Harry Musselwhite conducts with Kris Carlisle at the Steinway piano.



**April 16-May 4, 2012 | Senior Thesis Shows
M-F, 9 a.m. - 4 p.m. | Moon Gallery**

Students following the "Studio Art" concentration in the Art Program are required to present an exhibition of their art work in their chosen discipline. They typically choose from painting, drawing, printmaking, design, ceramics, photography, the digital arts or mixed media. They present a professionally mounted show for a week in the gallery, complete with publicity and a reception.



April 19, 2012 | Spring Concert: The Berry College Wind Ensemble presents: "Band Classics"

Glenn Garrido, director | 7:30 p.m. | Ford Auditorium

The 65-member Berry College Wind Ensemble closes its 2011-12 season with a program comprised of works from the band core repertoire.

April 19-22, 2012

THE BERRY COLLEGE THEATRE COMPANY PRESENTS

Erin Go Bragh: An Evening of One-Acts plays from the Irish Literary Revival

**Directed by the students of the Advanced Directing class
8 p.m. nightly | 2 p.m. Sunday matinee | E.H. Young Theatre**

Just over a hundred years ago, the Irish National Theatre Society, Ltd., better known as The Abbey, after the street on which the theatre is located, was founded in Dublin as the centerpiece of the Literary Revival that contributed immensely to the creation of the independent Irish republic. Abbey directors W.B. Yeats, Lady Augusta Gregory, and J.M. Synge all wrote plays for the theatre and were soon joined by G.B. Shaw, Douglas Hyde (soon to be Ireland's first President, and Sean O'Casey). These one-acts are representative of the early offerings of the ensemble and include folk comedies, peasant drama, and stirring tragedy. Amateur and professional theatres alike revive these very plays in Ireland and abroad to this day. Slainte!



April 19-22, 2012 E.H. Young Theatre
Nightly 8 p.m./Sunday Matinee 2 p.m. Tickets 706-236-2263



**April 23, 2012 | Spring Concert: The Berry College Symphony Orchestra | Mirna Ogrizovic-Ciric, director
7:30 p.m. | Ford Auditorium**

The Berry College Symphony Orchestra, comprised of string and wind players from the campus and community, delights audiences with great orchestral literature. This concert will feature the winners of the BCSO Concerto Competition.



**April 24, 2012 | Spring Concert: Woodwind Ensembles
John Davis and Mickey Fisher, directors
7:30 p.m. | Ford Auditorium**

Berry woodwind faculty members Mr. Mickey Fisher and Dr. John Davis will present the Berry Clarinet Ensemble, Flute Choir, and Saxophone Ensemble in a program of original and arranged chamber works that utilize the exotic as well as the more familiar members of these instrument families.

Fine Arts Faculty

Dr. Stan Pethel, Chair Ms. Kay Simms, Secretary

ART

Mr. Bradley Adams
Ms. Meg Dreyer
Mr. Jere Lykins
Dr. Virginia Troy

THEATRE

Mr. Christian Boy
Ms. Alice Bristow
Dr. John Countryman

MUSIC

Ms. Ruth Baker
Dr. Kris Carlisle
Dr. Mirna Ogrizovic-Ciric
Dr. John Davis
Dr. Luther Enloe
Mr. Mickey Fisher
Dr. Glenn Garrido
Mr. Eric Hanson
Dr. Adam Hayes

Dr. Ellie Jenkins
Mr. Harry Musselwhite
Ms. Kathryn Nobles
Dr. Stan Pethel
Mr. Wade Williams

DANCE

Dr. Jeanne Schul

BERRY COLLEGE

Firsthand



Firsthand



THE FINE ARTS DEPARTMENT AT BERRY COLLEGE

The Berry College Fine Arts Department incorporates the artistic disciplines of the visual arts, music, theatre and dance. The mission of the Fine Arts Department is to provide a quality education and practical experiences for our students, while enriching the artistic and cultural presence on our campus, community and world.

Undergraduate degrees of study are available in several concentrations including: Theatre, Music Performance, Music Education, Music Business, Studio Art, Art History and Art Education. Visit us at www.berry.edu, or contact us at:

*Fine Arts Department • Berry College
P.O. Box 490309 • 706.236.2289*

ABOUT BERRY COLLEGE

Berry College, an independent, coeducational institution of approximately 2,000 students, is recognized nationally for its quality and value. Located on a beautiful 26,000-acre campus, Berry provides an integrated education that unites a challenging academic program with opportunities for meaningful work experience and significant service to others. This commitment to providing a firsthand educational experience – expressed as “Head, Heart and Hands” by college founder Martha Berry – remains just as relevant today as it was when the institution was founded in 1902.



BERRY COLLEGE

Experience it Firsthand

Department of Fine Arts
P.O. Box 49039
Mount Berry, GA 30149-0309

ADDRESS SERVICE REQUESTED

NON-PROFIT ORG.
U.S. POSTAGE
PAID
ROME, GA 30161
PERMIT NO. 2